

DRUM CHIPPER BX218D13

Description:

Drum wood chipper is specially designed equipment for wood chipping. Widely used in shaving board, chipboard and paper mills and other industrial production.

This kind of machine is mainly used to chip wood logs, wood cutting remains (tree stumps, branches, etc.) and waste material from wood working industry (slab, lath, logs core and waste veneer, etc). Wood chip size is adjustable upon clients' requirements. It can also cut non-wood materials, such as sugar cane, palm trunk, bulrush, gross bamboo and so on.

BX218D13 drum chipper is equipped with robust steel plate chain conveyor and teeth roller for force feeding of raw material. Both wood logs and bundle of twigs can be processed continuously. Steel plate conveyors are designed for special applications. The belts consist of several steel plates connected by hinges and are suitable for materials with extreme properties: e.g. high temperatures, heavy soiling, sharp-edged contours, contaminated with milling chips, moisture or emulsions. The belts are driven on both sides by single chains, sprockets and three-phase geared motor.



Features:

- ❖ No pit required, much less civil work cost. The drum chipper can directly sit on concrete floor and run.
- ❖ Robust feeder adopts steel plate chain conveying technology.
- ❖ Automatic feeding adjustment and overload protection.
- ❖ Adjustable sizes of the chips.
- ❖ Easy maintenance and service.

Technical Parameters:

1. Feeding system

Technology	Steel plate chain conveyor, equipped with teeth roller for force feeding
Model	SPC1300
Motor power	7.5kW+7.5kW
Width of steel plate feeder	1300mm
Length of steel plate feeder	5000mm
Feeding Speed	0-18 m/min adjustable
Material of steel plates	16Mn

2. Drum chipping system

Diameter of knife roller	800 mm
Width of knife roller	1340 mm
Rotation speed of knife roller	540 rpm
Quantity of flying knives	2x3=6 pcs.
Knife material	55Si6
Dimensions per knife	670x185x20 mm
Size of inlet opening	1300x600 mm

HENAN SINOVO MACHINERY ENGINEERING CO., LTD

Max. diameter of feedstock	Logs $\leq 340\text{mm}$ (bundle of twigs $< 500\text{mm}$)
Motor power	160 kW
Particle size of the chips	Customized as per requirement

3. Chips discharge system

Technology	Rubber belt conveyor, adopting 4-layer nylon belt.
Width of discharge conveyor	1200 mm
Length of discharge conveyor	11000 mm
Height of dropping end	≤ 4500 mm above the ground.
Motor power	7.5 kW

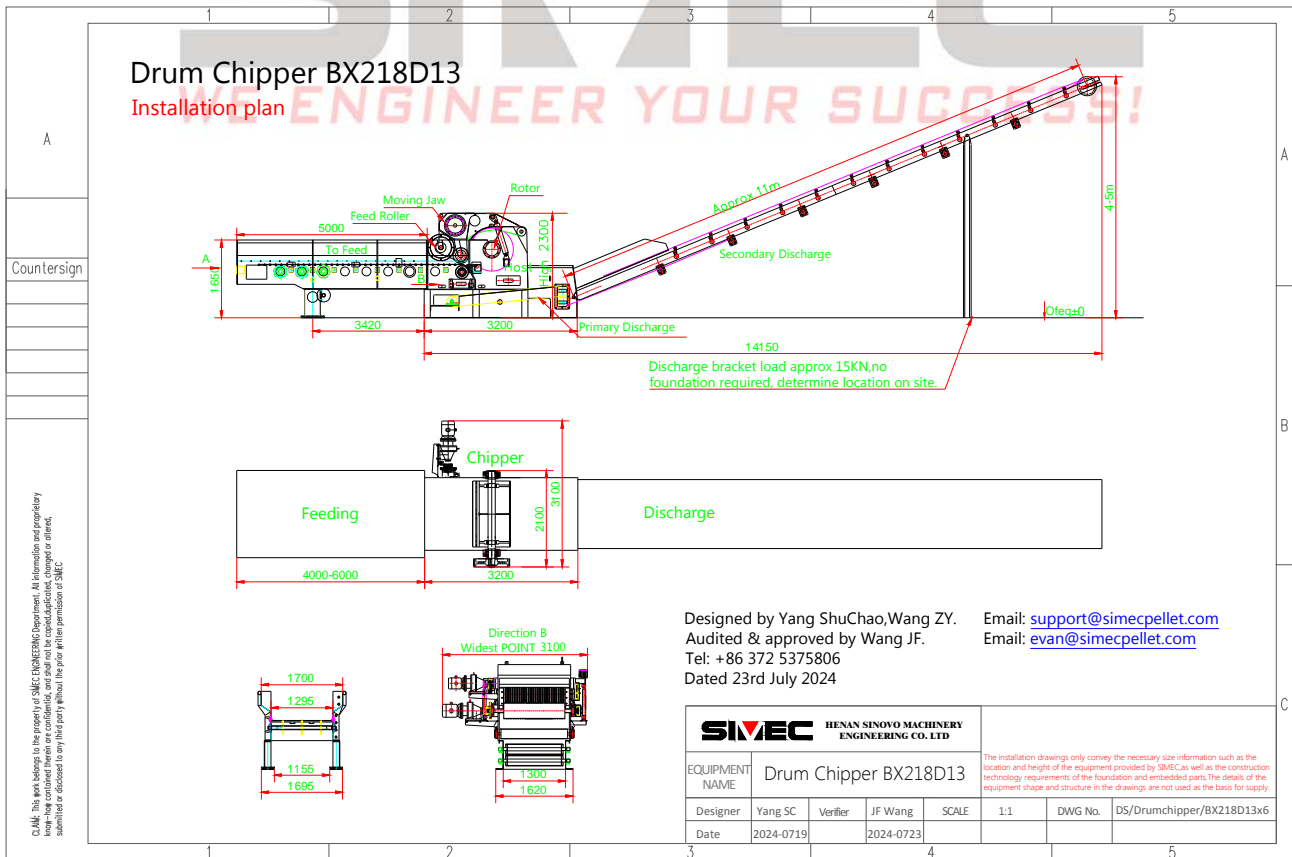
4. Electric control system

Control cabinet	QZB160 model.
Features	<ul style="list-style-type: none"> ❖ Adopting soft starter for 160 kW electric motor. ❖ Adopting frequency conversion control for the feeding system. ❖ Automatic feeding adjustment and overload protection. ❖ Including remote control.

5. Hydraulic system

Capacity of hydraulic oil tank	60 liters.
Motor power of hydraulic oil pump	3 kW
Model of hydraulic oil pump	4WE10D31B

Installation Plan:



For more information, please contact SIMEC.

Email: info@simecpellet.com

Technical specifications are subject to change without notice in the future.