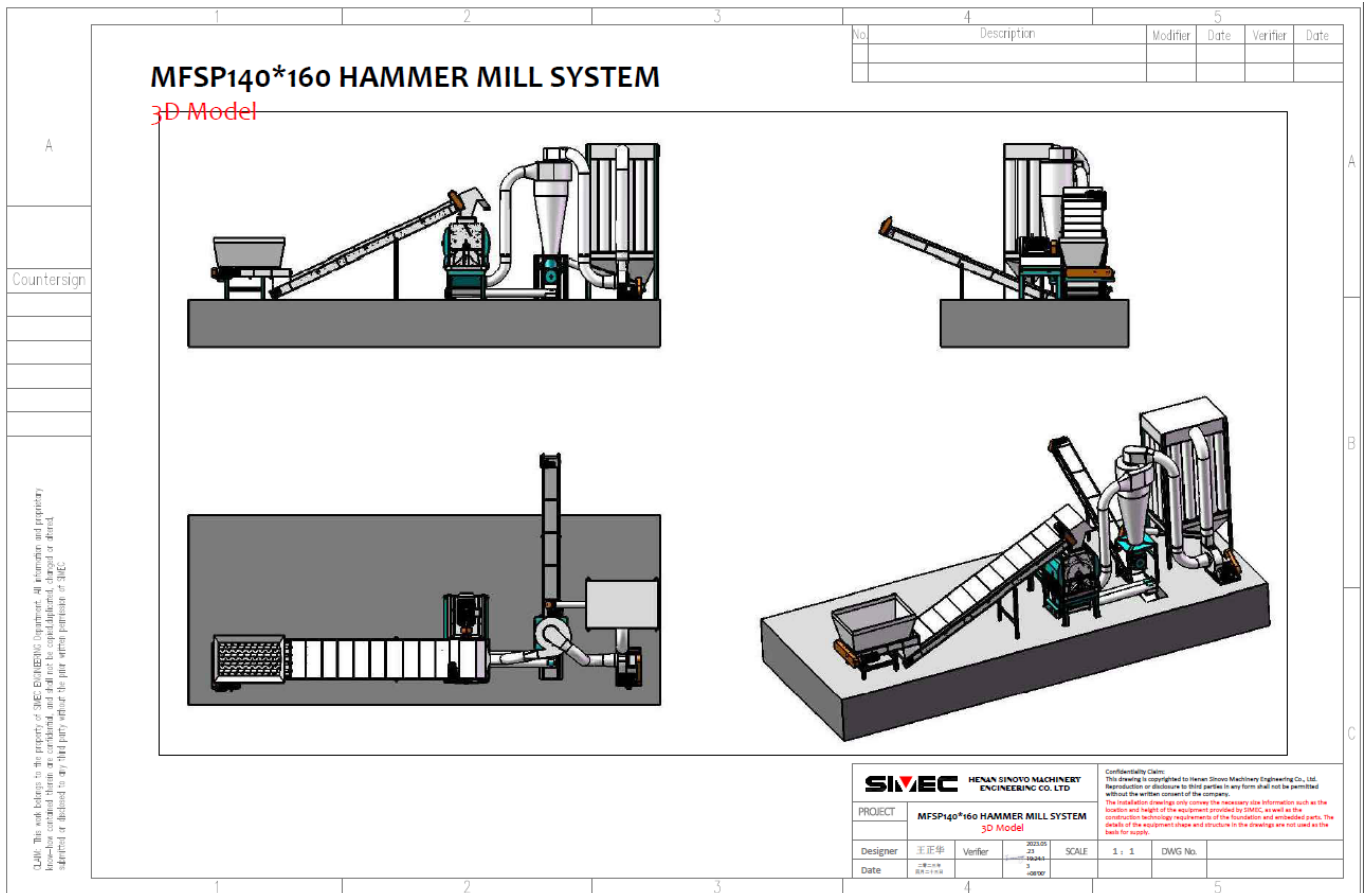


MFSP140/160 HAMMER MILL PLANT

I. Compact Design – complete grinding plant:



II. Equipment List:

No.	Items	Model	Power (kW)	Remarks
101	Feeding Hopper	5M ³	-	Made of Q235-3mm steel material. Channel steel support.
102	Belt Feeder	TLSS30*4	15	<ul style="list-style-type: none"> ❖ Frequency control adjusting feeding speed automatically as per load status of hammer mill. ❖ Magnetic belt roller, separating metal impurity;
103	Three Way Separator		-	Equipped with adjusting device for iron & stone removal.
104	Hammer Mill	MFSP 140/160	315	<ul style="list-style-type: none"> ❖ Multi-point shearing comminution. Multi corner angle hammers are made of 8mm thickness high strength alloy steel through heat treatment; ❖ SKF BEARINGS for milling rotor, including AUTOMATIC BEARING COOLING SYSTEM; ❖ SIEMENS standard motor; ❖ Multiple crushing chamber design; ❖ DIAMETER 1400MM grinding rotor. WIDTH 1600MM grinding chamber; ❖ Specially designed fast open slide gates to change screen and to inspect inside status; ❖ 8 pieces of screens are equipped; ❖ Grinding rotor lifting device to benefit maintenance on bearings, etc;

HENAN SINOVO MACHINERY ENGINEERING CO., LTD

				❖ Professionally designed three stage material unloading system to reduce power consumption.
105	Equipment Base & Settling Bin		-	Complete welding set by heavy steel, including settling bin & vibration dampers.
106	Discharge Augers	TLSS30*2	7.5	High efficiency double augers with air proof technology.
107	Pipeline	Ø400-Ø500	-	Including straight pipe, elbow pipe, reducer pipe, valve, etc.
108	Cyclone	φ1400	-	
109	Airlock	GFY80L	3	Anti-blockage design, complete welding set.
110	Fan	GM45C	45	❖ Well balanced fan, low noise, high pressure; ❖ Including air volume adjust device.
111	Dust Collector	BDC24	1.5	❖ Assist filtering system with de-dusting efficiency over 99%; ❖ Including dust discharging system.
112	Belt Conveyor	SS60	3	❖ Thickened "V" type rubber belt; ❖ Width: 600 mm, length: 8000 mm; ❖ Made of Q235-4mm steel material.
TOTAL AMOUNT		390 kW		

III. Technology Description:

MFSP 140/160 biomass hammer mill can process all kinds of coarse fibers and block materials, such as wood chips, chopped barks and branches, shredded roots, wood blocks, chipped wood slabs, corn cob, chopped paddy straw and cotton stalk, shredded palm EFB fiber and so on.

It adopts steel plate welding structure, the motor and the rotor of the hammer mill are installed on the same base and connected by couplings directly. The top-open feeding inlet matches with dilated feeding belt conveyor. The grinding hammers are arranged symmetrically. Entire machine is compact in structure, strong and durable, safe and reliable, easy to install, easy to operate and maintain, small vibration, high productivity.



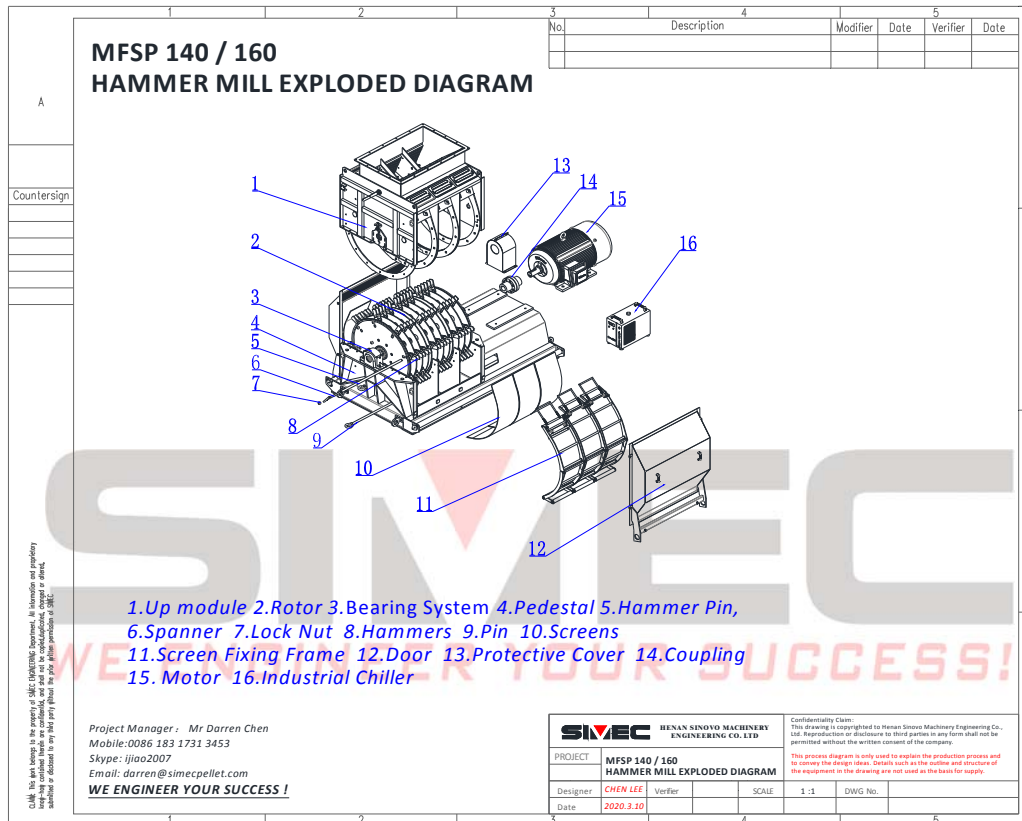
IV. Parameters of Hammer Mill:

Model	MFSP 140/160
Capacity	
- <i>The capacity is based on wood material with 15%~18% mc, and the hammer mill is equipped with φ10 mm screen.</i>	7~9 MT/H

HENAN SINOVO MACHINERY ENGINEERING CO., LTD

Main Power	315 Kw
Main Shaft Rotation Speed	1480 rpm
Rotor Diameter	1400 mm
Milling Chamber Width	1600 mm
Dimension	3920*2010*2220
Weight	8000 KG

V. Diagram of Hammer Mill:



VI. Features:

- ❖ **SKF BEARINGS** for milling rotor, including **AUTOMATIC BEARING COOLING SYSTEM** by circulating liquid coolant. Reduce bearing maintain consumption but increase the service life of bearings.
- ❖ 315 KW **SIEMENS** standard motor. Multiple milling chamber design. **DIAMETER 1400MM** grinding rotor, **WIDTH 1600 MM** grinding chamber.
- ❖ **Specially designed triple stage material unloading system to reduce power consumption.**
- ❖ Reinforced and welded as a whole pedestal plus the uniquely designed damper results stable run.
- ❖ Specially designed fast open slide gates to change screen and to inspect inside status.
- ❖ Double layer sound-proof slide gates. Low operation noise, about 90~95 decibel.
- ❖ Ingeniously hammer fixing groove results quick hammer replacement.
- ❖ Split type screen design; reduce maintenance cost of screens.
- ❖ Grinding rotor lifting device to benefit maintenance on bearings, etc.
- ❖ Free of dust emission.